

B3 Automatic Weigh-Wrap System

Discover the B3 Automatic Weigh-Wrap System, a fully automatic stretch film wrapper designed for high-volume, fresh food packaging. This system expertly combines precise wrapping with integrated weighing for optimal efficiency and product appeal. Flexible in label positioning and easy to clean, the B3 seamlessly integrates with RetailPowerScale software, ensuring attractive, customer-focused packaging with minimal effort.



More information
High performance with a wide range of solutions and options.

Specifications

Facts

Details

Functionality	Fully automatic	Designed around optimal efficiency, the operator does not have to select a tray size when wrapping and or labeling product. The fully automated system detects the tray dimensions and places the label wherever desired. This results in increased productivity and sales.
Performance data	Up to 28 packages/minute	<ul style="list-style-type: none"> – Incl. weighing, packaging, labeling – Speed depending on the package size
Device software	RetailPowerScale	<ul style="list-style-type: none"> – Bizerba device software that is familiar to operators who use Bizerba scales – Compatible with RetailFramework products
Operator display	12.1" touch TFT	<ul style="list-style-type: none"> – Resolution: 800 x 600 pixels – LED backlit – 16.7 million colors – Resistive touch, can be operated with gloves – Infinitely adjustable, swivel-mounted, adjustable angle
Operating modes	<ul style="list-style-type: none"> – Wrapping and labeling – Only wrapping – Only labeling – Manual labeling 	<ul style="list-style-type: none"> – Standard operating mode – E.g. If a label is not required – For prepackaged products – It acts as a secondary backup meat scale during busy seasonal times, increasing the amount of product that can be placed on the sales floor
Cleaning and service	<ul style="list-style-type: none"> – Large doors – Removable lifting table for easy cleaning – Easily removable infeed conveyor 	<ul style="list-style-type: none"> – Interior ergonomically accessible with doors that allow for easy access no matter the environment. – Allows for ease of removal and cleaning, resulting in a more sanitary unit and less chance for cross contamination. – No tools necessary. Two simple latches allow for removal of the entire infeed for proper maintenance

Packing Specifications

Technology	Stretch film packaging	PVC film with other specialty types available upon request
Package dimensions	<ul style="list-style-type: none"> – Width: 120-400 mm – Depth: 120-260 mm – Height: 10-160 mm 	<ul style="list-style-type: none"> – Suitable to almost all customer needs and products with the ability to customize – Dimensions incl. product to be packaged
Package weight	Max. 15lbs / 6kg	
Number of film rolls	One film roll, universal use	One film width eliminates the need to order two separate rolls of film as found with most competitors. Reducing cost and error when ordering.
Film width	410 mm	
Film thickness	PVC: 55 – 63 gauge	Single Layer, Dual Layer or Recyclable Film

Core Ø of film roll	74-118 mm	
Outer Ø of film roll	Max. 220 mm	
Printing Specification		
Number of labels	<ul style="list-style-type: none"> – One label – Two labels with second printer version 	<ul style="list-style-type: none"> – For the price label – For promotional labels, extra information etc.
Die cut label printer	<ul style="list-style-type: none"> – Printing technology: Thermal-direct process – Print width: 80 mm – Backing paper width: max. 86 mm – Print resolution: 8 dots/mm – Print speed: Max. 150 mm/s 	Depending on features and configuration
Linerless printer with auto-cutter function	<ul style="list-style-type: none"> – Label width: 2"- 3" – Less roll changes due to larger linerless rolls: Ø 150 mm – Flexible label length: Ideally suitable for printing comprehensive information – Intelligent cleaning function 	
Positioning	Freely adjustable on entire package including 90 degree rotation	<ul style="list-style-type: none"> – Mechanical 3D applicator – No compressed air connection necessary
Options	Facts	
Second printer	Functionality depends on features and configuration	

Label layout	Adjustment with Bizerba Label Designer	Quick and easy layout adjustment
Label size	– Max. 80 x 105 mm (width x length) – Min. 36 x 40 mm (width x length)	Depending on features and configuration
Outer Ø of label roll	Max. 300 mm	
Core Ø of label roll	76 mm	
Weighing Specification		
Package weight	Max. 30lbs / 15kg	In checkweigher and manual labeling mode only
Weighing system	Multi-interval strain gauge weighing system	In the lower range weighing is always done with the smaller scale interval
Miscellaneous		
Operating conditions	– Operating temperature: +2 °C to 20 °C – Relative humidity: ≤ 85% (non-condensing)	
Electrical connection	– 208-240 V	– Supplied with L6-20P M connector – 50/60 Hz, 2 Wire + ground
Electronics platform CPU	Intel® Celeron® Processor N3160 Quad Core	– Clock rate of up to 2.24 GHz – 2 MB L2 cache – Instruction set: 64 bit – Integrated graphics card (Intel® HD Graphics 400)
Working memory	DDR3L RAM	8 GB
Mass memory	SSD	60 GB, optionally 120 GB
Operating system	– Windows 10	– 64 bit
External interfaces	– 1 x USB 2.0 – COM – LAN	– DSUB (RS232) – RJ45, GBit LAN
Surface	Stainless steel, matt	
Weight	approx. 450 kg	Depending on product configuration
Minimum dimensions W x H	906 x 1880 mm	– For transportation to the place of installation – Quickly removable components – Disassembly and assembly by trained service technicians
Dimensions W x D	906 x 1490 mm	Installation surface without discharge roller conveyor
WLAN	– USB	– USB WLAN stick, no continuous operation possible, 802.11 a/b/g/n up to 300 Mbit/s
Operating direction	– From left to right – from right to left	– Configurable to be a left or right exit
Discharge roller conveyor	– Available in different configurations – Straight discharge	– Wrapped product leaves the machine and is fed to the operator – For further processing on other devices

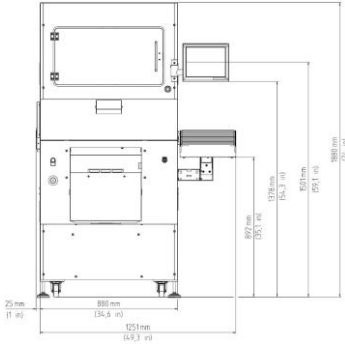
Symbols



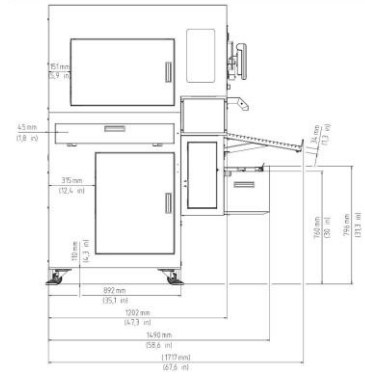
Windows

Intertek

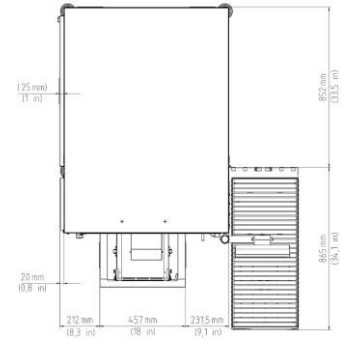
Dimensional drawings



B3 front view



B3 side view



B3 top view

Bizerba USA
5600 Eastport Blvd
Richmond VA, 23231
Phone : 732 565 6001

marketing@bizerba.com

www.bizerba.com