

Data Sheet

BIZERBA

iL Special 150T/SP

The iL Special 150T/SP is entirely made of stainless steel and specifically designed for wall mounting. The load platter may be folded up, if needed. It saves space and simplifies thorough cleaning. An integrated rear wall ensures exact weighing results.



More information
High performance
with a wide range of
solutions and options.

Product description

Electromechanical load receptor iL Special 150T/SP can be freely positioned at the wall. This provides optimal working conditions based on your environment and requirements.

The fold-up load platter makes room when space is at a premium. This robust load receptor was developed for wet and harsh ambient conditions. Therefore, all functional and mounting parts are made of stainless steel – for an optimal long-term accuracy and a high wear-resistance.

The open design allows particularly easy cleaning. An integrated rear wall ensures exact weighing results and at the same time hygiene and cleanliness of your products and the wall behind.

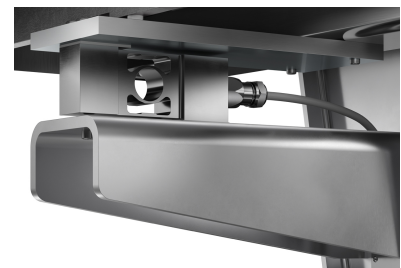
Our verifiable load receptor iL Special 150T/SP is available in different weighing ranges, as a dual range scale and dual interval scale. The load receptor supports all Bizerba weighing terminals.



iL Special 150T/SP



Table folded



Detail load cell

Highlights

- Completely made of 1.4301 stainless steel for wall mounting
- can be placed anywhere for optimal workstation organization
- Foldable load platter

Options

- Threaded rods and mounting material for fastening through the wall (e.g. cavity walls)

My Bizerba

We offer you solutions from a single source which can be customized and allow you to respond to any change in a flexible manner. Benefit from costs which can be planned and efficient processes. We are happy to advise you.

Bizerba SE & Co. KG
Wilhelm-Kraut-Straße 65
72336 Balingen

T +49 7433 12-0
fax: +49 7433 12-2696
marketing@bizerba.com

www.bizerba.com