

Fact Sheet

LabelSecure G2 L

BIZERBA

Visual label inspection: LabelSecure offers you a unique inspection performance for different products. The Vision inspection system checks labels for correct information and intactness. As needed, LabelSecure is available for 100 percent control or for samples



More information
High performance with a wide range of solutions and options.

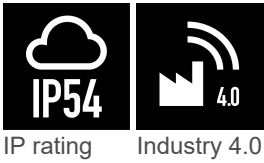
Specifications	Facts	Details
Functions	Checking of presence, position and orientation of labels Logo recognition Reads information such as characters and codes in all directions (omnidirectional) Matching of the labels from above and below	Product name, sell-by date, batch number, 1D and 2D codes Character size at least 3 mm Checks the correct allocation of labels
Package size	L x W x H Min. 100 mm x 40 mm x 10 mm Max. 650 mm x 300 mm x 220 mm	300 mm x 300 mm x 105 mm (maximum package size with rejection system)
Camera system	2 cameras	top bottom
Dimensions	L x W x H 1,095 mm x 927 mm x 1,816 mm 1,295 mm x 927 mm x 1,816 mm 1,495 mm x 927 mm x 1,816 mm	Belt configurations 500/500 500/700 500/900
IP rating	IP54	
Max. belt speed	90 m/min	
Operating unit	18.5 " touch screen	
Interfaces	USB Ethernet	
Mains voltage	110 - 230 V AC 50/60 Hz	
Ambient temperature	1 °C to 40 °C - 10 °C	Operation Storage
Humidity	20 - 90%, non-condensing	
Options	Facts	Details
Rejection system	Pusher Reject bin	Only for belt configurations 500/700 and 500/900 Products from 2 kg and higher upon request Products with a length < 350 mm, depending on belt speed Products with a length > 350 mm upon request
Food Safety Package	Ejection monitoring Reject bin fill level monitoring	

	Package flow monitoring	
Optical signaling device	Signal lamp	Visual alarm for detection of non-conforming package
RFID	RFID login function for device access	
Communication GLM-levo	Start	
	Stop	
	Belt speed	
	PLU change	
	Emergency stop	
	Cancellation of totals of ejected packages	

Info graphics

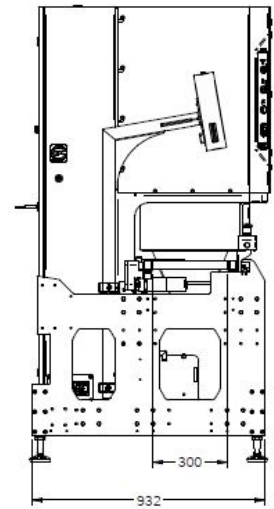
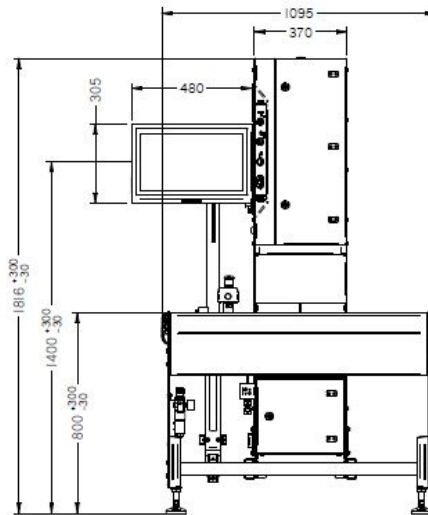
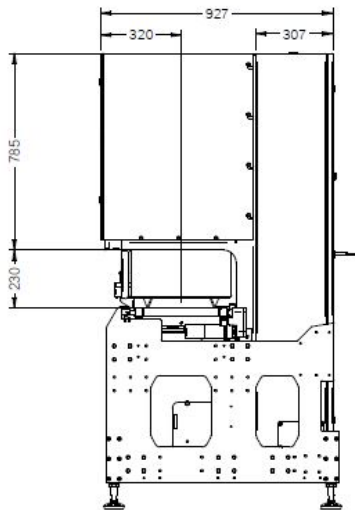


Symbols

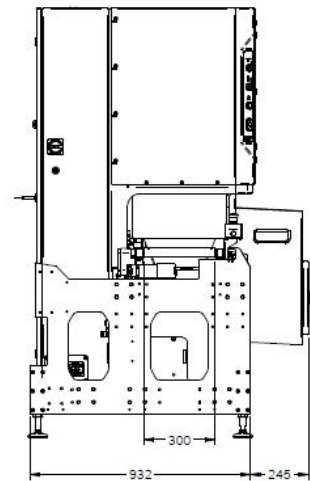
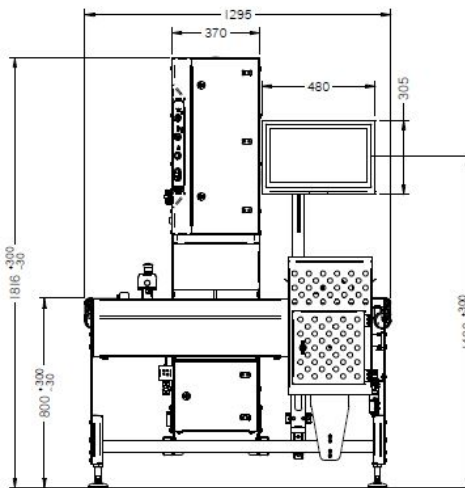
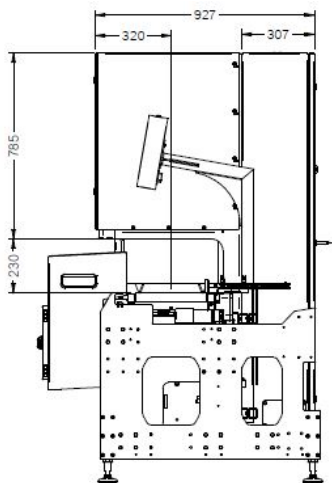


IP rating Industry 4.0

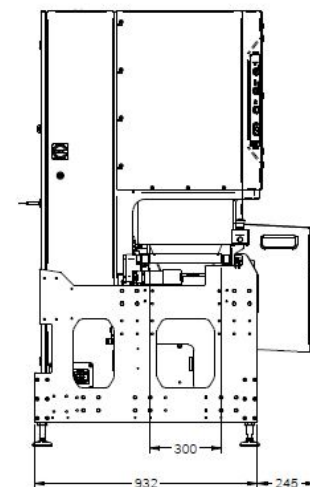
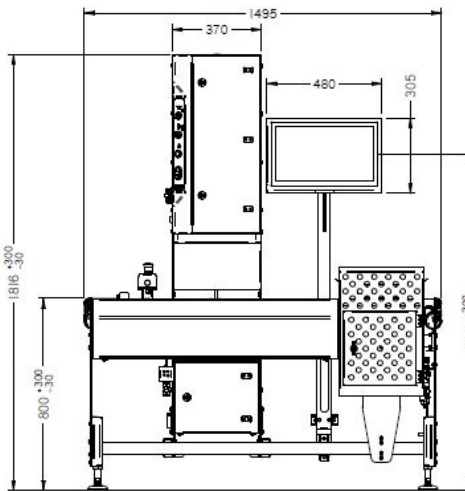
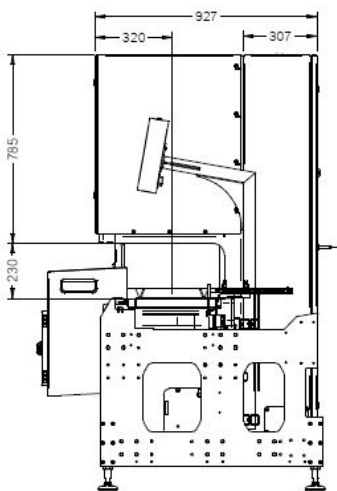
Dimensional drawings



LabelSecure G2 L 500/500



LabelSecure G2 L 500/700



LabelSecure G2 L 500/900

Bizerba SE & Co. KG

Wilhelm-Kraut-Straße 65
72336 Balingen

T +49 7433 12-0
fax: +49 7433 12-2696
marketing@bizerba.com

www.bizerba.com